

INTERIM MANAGEMENT REPORT OF FUND PERFORMANCE

Specialized Funds

Altamira Resource Fund

For the period ended June 30, 2011

This interim management report of fund performance contains financial highlights, but does not contain interim or annual financial statements of the mutual fund. A copy of the interim or annual financial statements can be obtained on request, and at no cost, by calling 1-888-270-3941 or 514-871-2082, by writing to us at National Bank Securities Advisory Service, 500, Place d'Armes, 12th floor, Montreal, Quebec, H2Y 2W3, by visiting our website at www.nbc.ca/financial_reports, by visiting SEDAR's website at www.sedar.com, or by contacting your investment advisor.

You may also contact us using one of these methods to request a copy of the investment fund's proxy voting policies and procedures, proxy voting disclosure record, or quarterly portfolio disclosure.

Management Discussion of Fund Performance

Results of Operations

For the six-month period ended June 30, 2011, the Altamira Resource Fund Investor Series units returned – 5.98% compared to – 5.13% for the Fund's blended benchmark index of 50% of the S&P/TSX Energy Index (CA\$) (return of – 0.56%) and 50% of the S&P/TSX Materials Index (CA\$) (return of – 9.73%). Unlike these indexes, the Fund's performance is calculated after fees and expenses. Please see the *Past Performance* section for returns of the Advisor Series. Returns of the Advisor Series may vary mainly because of fees and expenses.

Resource prices started the year 2011 on a positive note, on signs that the global economy had moved from the recovery stage to expansion, while growing unrest in the Middle East and North Africa propelled oil prices past the century mark. Investor sentiment turned cautious during the second quarter, in reaction to weakening U.S. economic data, specifically, manufacturing, housing and employment and renewed fears of credit contagion, as European sovereign debt issues resurfaced. While these fears did ease somewhat towards quarter end on Greece's adoption of austerity measures, political disorder continued in a number of MENA countries. For their part, commodity investors remained focused on the civil war in Libya and the resulting effects on global oil supply, at a time when the International Energy Agency (IEA) decided to intervene in the open markets. Late in June, the IEA decided to pump 60 million barrels of oil from emergency reserves, in order to ease pricing pressure and help some countries evade the possibility of economic relapse.

On the whole, these conditions made for very volatile markets, which caused commodity prices to swing in both directions prior to settling largely mixed. In the base metal area, Aluminum ended the period higher, while Copper, Nickel and Zinc finished lower. Elsewhere, in the precious metals space, Gold and Silver were up by 5.60% and 12.20% respectively, while in the Energy group, West Texas Intermediate (WTI) Crude oil increased by 4.42% and natural gas decline by 0.70%.

Under these circumstances, the Fund underperformed its benchmark, largely as a result of security selection. Within Energy, Trilogy, Tourmaline and Precision Drilling added value, while overweight positions in Materials stocks Cline Mining, Silver Wheaton and Teck Resources detracted value.

Recent Developments

On June 9, 2011, Mr. Chad Gilfillan replaced Mr. Paul Wong and assumed the responsibility of managing the Fund.

Over the period, the level of production growth and exploration/political risk contained in the portfolio was adjusted lower, as the outlook for the global economy was downgraded and unforeseen events triggered selling opportunities. The weight in Energy was increased, while Materials was decreased.

More specifically, the Fund sold its position in Uranium One, on concerns that uranium prices will continue to decline as scrutiny of the nuclear industry increases in the aftermath of the natural disasters in Japan. Furthermore, the Fund's position in Kinross was liquidated and the proceeds reallocated into Silver Standard, adjusting exposure out of large cap gold into mid cap silver, on expectations that industrial use for silver will double during the next year. On the other hand, the portfolio manager added Goldcorp, a leading gold producer that has a solid pipeline of valuable assets to the Fund's mix, as well as Claude Resources and Detour Gold, two Canadian gold exploration companies with a strong operating base and highly experienced management and technical teams.

Into the second half, the portfolio manager is maintaining an overweight in Oil, given that demand for the commodity remains strong in emerging market economies, while supply responses remain tepid. Additionally, the portfolio manager is keeping an overweight in Precious Metals, as the U.S. dollar weakness resulting from monetary policy and inflation fears will likely push precious metals prices higher. On the other hand, the Fund remains underweight in Natural Gas, which, despite recent weather and major storms, failed to rally during what is normally the seasonal strong period.

Going forward, the portfolio manager believes that the price direction of commodity prices and the level of volatility will in all likelihood affect the portfolio's performance. This will be affected most by the state of the global economy with credit market conditions and the outlook for China being the key drivers. As such, the Fund will be focused mostly in mid to small cap growth resource companies with an emphasis on return on capital, capital efficiency, balance sheet, and a high inventory of exploration and development opportunities. Notwithstanding, should credit markets deteriorate further, and/or the economic outlook for China worsens, the Fund will move to a more defensive positioning.

Future Accounting Standards

In February 2008, the Canadian Accounting Standards Board ("AcSB") confirmed that all publicly accountable enterprises would be required to report under International Financial Reporting Standards ("IFRS") as published by the International Accounting Standards Board ("IASB") for fiscal years beginning on or after January 1, 2011. However, in January 2011, the AcSB approved a deferral of the effective date of entry in force of IFRS from January 1, 2011 to January 1, 2013 for investment companies that are currently applying Accounting Guideline AcG-18, "Investment Companies".

The deferral of the transition date to IFRS has been put in place to ensure that investment companies will not have to modify their actual accounting treatment for entities in which they have control while the IASB is completing the standard about investment companies.

Consequently, the Funds will publish their first audited financial statements in accordance with IFRS for the year ended

December 31, 2013 and will present comparative figures in accordance with IFRS for the year ended December 31, 2012, including an opening balance sheet as at January 1, 2012.

Given the deferral of the effective transition date to IFRS, management is closely monitoring the evolution of the standards and is adjusting its project consequently. In the periods preceding the first fiscal year in which IFRS will be adopted, the impact of transitioning to IFRS on the financial statements of the Funds will be disclosed as they become known.

Related Party Transactions

National Bank of Canada (“the Bank”) and its affiliated companies’ roles and responsibilities related to the Fund are as follows:

Trustee

Natcan Trust Company (“NTC”), a wholly owned subsidiary of the Bank, is the Fund’s trustee. In this capacity, it is the legal owner of the Fund’s investments.

Fund Manager

The Fund is managed by National Bank Securities Inc. (“NBS”), which is a wholly-owned subsidiary of the Bank. Therefore, NBS provides or ensures the provision of all general management and administrative services required by the Fund’s current operations, including investment consulting, the arrangement of brokerage contracts for the purchase and sale of the investment portfolio, bookkeeping and other administrative services required by the Fund.

The Fund reimbursed the Fund Manager for operating expenses, at cost, incurred in administering the Fund, including trustee, record-keeping, custodial, legal, audit, investor servicing, and securityholder reporting fees.

As described under the heading Management Fees, the Fund pays annual management fees to NBS as consideration for its services.

Portfolio Advisor

Management of the Fund’s portfolio has been delegated by NBS to Natcan Investment Management Inc. (“Natcan”), a corporation of which the Bank is the majority shareholder. In that capacity, Natcan provides the Fund with portfolio management services, including trading, carrying out transactions and brokerage services. The fees payable to Natcan are calculated by applying a percentage to the average net asset value under management for each month.

Performance fees may be payable by NBS if the performance criteria set for certain National Bank Funds are met.

Distribution of Fund Units

NBS acts as Distributor for the Fund. In this capacity, NBS buys, sells and swaps securities through Bank branches and the National Bank Securities Advisory Service in Canadian provinces and territories, and through external registered representatives. Fund units are also offered by National Bank Direct Brokerage Inc., CABN Investments Inc. National Bank Financial Inc. and other affiliated entities. Each month, brokers receive a commission representing a percentage of the average daily value of the securities held by their clients.

Transfer Agent and Custodian

NTC acts as registrar for the Fund’s securities and the names of unitholders. NTC also acts as the Fund’s custodian. The fees for NTC’s custodial services are based on the standard rates in effect at NTC.

Brokerage Fees

The Fund may pay broker’s commissions at market rates to a corporation affiliated with NBS. The brokerage fees paid by the Fund for the period are as follows:

	Period ended June 30, 2011
Total brokerage fees	\$552,144.00
Brokerage paid to National Bank Financial	\$14,850.00

Securities of related issuers, underwriting between related parties, transactions between funds and main trading activities between related parties

The Fund followed the standing instructions of its Independent Review Committee, which approved the following related party transactions:

- Purchasing or holding the securities of a related issuer, in particular, those of National Bank of Canada;
- Investing in the securities of an issuer when an entity related to the manager acts as an underwriter for the placement or at any time during the 60-day period after the end of the placement;
- Purchasing or selling securities to another investment fund managed by the manager or a company in the same group;
- Purchasing or selling debt securities on the secondary market, through related brokers that are main brokers in the Canadian debt securities market (in accordance with an exemption received from the Canadian Securities Administrators).

The manager has implemented policies and procedures to make sure that the conditions applicable to each of the above transactions are met. The applicable standing instructions require that these transactions be carried out in accordance with National Bank Securities policies, which specify, in particular, that investment decisions pertaining to these related party transactions must be made free from any influence by an entity related to National Bank Securities and without taking into account any consideration relevant to an entity related to National Bank Securities.

Furthermore, the investment decisions must represent the business judgment of the securities advisor, uninfluenced by considerations other than the best interest of the Fund and must achieve a fair and reasonable result for the Fund.

Registered Plan Trust Services

NTC receives a fixed amount per registered account for services provided as trustee for registered plans.

Administrative and Operating Services

The Bank provides the Fund with certain services, including accounting, reporting and portfolio valuation services. The costs incurred for these services are paid by the manager to the Bank.

Financial Highlights

The following tables show selected key financial information about the Fund and are intended to help you understand the Fund's financial performance for the period ended June 30, 2011 and the past five years.

Investor Series/Advisor Series*

*The Advisor Series was created on June 12, 2009.

The Fund's Net Assets per Unit⁽¹⁾

	Period ended June 30, 2011	2010	2009	2008	2007	2006
Net Assets, beginning of year	\$ 48.69	\$ 35.15	\$ 25.64	\$ 37.31	\$ 31.44	\$ 24.16
Increase (decrease) from operations						
Total revenue	\$ 0.16	\$ 0.45	\$ 0.40	\$ 0.61	\$ 0.38	\$ 0.31
Total expenses	\$ (0.59)	\$ (0.89)	\$ (0.68)	\$ (0.92)	\$ (0.91)	\$ (0.73)
Realized gains (losses)	\$ 5.27	\$ 6.80	\$ 0.61	\$ 3.37	\$ 7.27	\$ 7.39
Unrealized gains (losses)	\$ (7.81)	\$ 7.17	\$ 9.17	\$ (14.63)	\$ (0.97)	\$ 3.04
Transaction costs on purchase and sale investments	\$ (0.12)	\$ (0.28)	\$ (0.21)	\$ (0.10)	\$ (0.04)	\$ —
Total increase (decrease) from operations⁽²⁾	\$ (3.08)	\$ 13.25	\$ 9.29	\$ (11.67)	\$ 5.73	\$ 10.01
Distributions:						
From income (excluding dividends)	\$ —	\$ —	\$ —	\$ —	\$ —	\$ —
From dividends	\$ —	\$ —	\$ —	\$ —	\$ —	\$ —
From capital gains	\$ —	\$ —	\$ —	\$ —	\$ —	\$ —
Return of capital	\$ —	\$ —	\$ —	\$ —	\$ —	\$ —
Total annual distributions⁽³⁾	\$ —	\$ —	\$ —	\$ —	\$ —	\$ —
Net Assets as at June 30, 2011 and December 31 of years shown	\$ 45.66	\$ 48.69	\$ 35.15	\$ 25.64	\$ 37.31	\$ 31.44

⁽¹⁾ This information is derived from the Fund's unaudited interim financial statements and audited annual financial statements. The net assets value per security presented in the financial statements differs from the net asset value calculated for security pricing purposes. The differences are explained in the notes to the financial statements.

⁽²⁾ Net assets and distributions are based on the actual number of units outstanding at the relevant time. The increase or decrease from operations is based on the weighted average number of units outstanding over the financial period.

⁽³⁾ Distributions were paid in cash or reinvested in additional units of the Fund, or both.

Ratios and Supplemental Data

	Period ended June 30, 2011	2010	2009	2008	2007	2006
Total net asset value (000's) ⁽¹⁾	\$ 202,671	\$ 214,800	\$ 164,810	\$ 102,995	\$ 163,286	\$ 154,074
Number of units outstanding ⁽¹⁾	4,418,360	4,402,484	4,664,757	4,006,589	4,366,129	4,900,570
Management expense ratio ⁽²⁾	2.45 %	2.31 %	2.30 %	2.58 %	2.64 %	2.65 %
Management expense ratio before waivers or absorptions	2.45 %	2.31 %	2.30 %	2.65 %	2.64 %	2.65 %
Trading expense ratio ⁽³⁾	0.51 %	0.73 %	0.71 %	0.28 %	0.12 %	0.24 %
Portfolio turnover rate ⁽⁴⁾	137.78 %	197.78 %	236.20 %	102.74 %	36.01 %	56.88 %
Net asset value per unit	\$ 45.87	\$ 48.79	\$ 35.33	\$ 25.71	\$ 37.40	\$ 31.44

⁽¹⁾ This information is provided as at June 30, 2011 and December 31 of years shown.

⁽²⁾ Management expense ratio is based on total expenses for the period indicated (excluding commissions and other portfolio transaction costs) and is expressed as an annualized percentage of the daily average net asset value during the period.

⁽³⁾ The trading expense ratio represents total commissions and other portfolio transaction costs expressed as an annualized percentage of daily average net asset value during the period.

⁽⁴⁾ The Fund's portfolio's turnover rate indicates how actively the Fund's portfolio adviser manages its portfolio investments. A portfolio turnover rate of 100% is equivalent to the Fund buying and selling all of the securities in its portfolio once in the course of the period. The higher a Fund's portfolio turnover rate in a year, the greater the trading costs payable by the Fund in the period, and the greater the chance of an investor receiving taxable capital gains in the period. There is not necessarily a relationship between a high turnover rate and the performance of a fund.

Management Fees

The Fund pays annual management fees to the Manager for its management services. The fees are calculated based on a percentage of the Fund's daily net asset value before applicable taxes and are paid on a monthly basis. A portion of the management fees paid by the Fund covers trailer fees and sales commissions paid to brokers. The remainder of the management fees primarily cover investment management and general administration services. The breakdown of major services provided in consideration of the management fees, expressed as an approximate percentage of the management fees is as follows:

Series		Management Fee	Distribution	Others [†]
Investor Series		2.00%	12.50%	87.50%
Advisor Series*	Front end	2.00%	25.00%	75.00%
	Back end		62.50%	37.50%
	Low-Load 1 to 3 years 4 years plus		25.00%	75.00%
			50.00%	50.00%

^(*) Excluding sales commissions paid on the Advisor Series with low load and back end fees, which are not paid for out of the management fees.

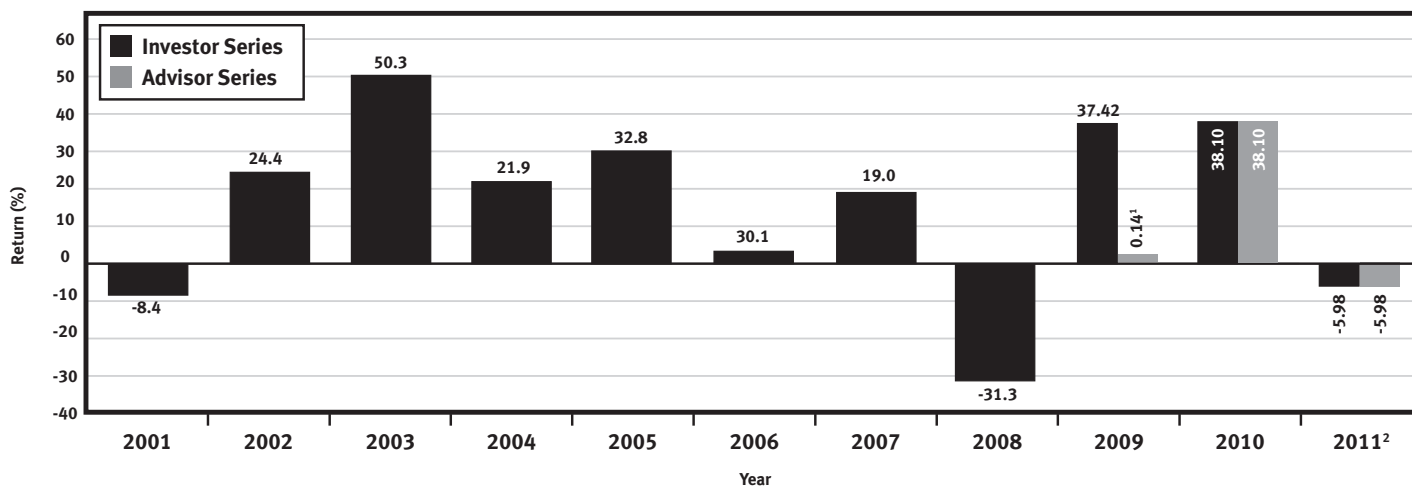
^(†) Includes all costs related to management, investment advisory services, general administration and profit.

Past Performance

Information on the Fund's past performance is presented in the graphs below. The graphs assume that fund distributions during the periods presented were reinvested in full in additional fund securities and do not take into account sales, redemption charges, distributions, or optional charges that would have reduced returns. Past performance of a Fund or series of a Fund does not necessarily indicate how it will perform in the future.

Annual Returns

The following bar chart shows the Fund's annual performance in each of the last years shown and illustrates how the Fund's performance has changed from year to year. It shows in percentage terms how an investment made on January 1 would have increased or decreased by December 31 for each year.



¹ Returns for the period from June 12, 2009 (inception date) to December 31, 2009.

² Returns for the period from January 1, 2011 to June 30, 2011.

Summary of Investment Portfolio

Portfolio Top Holdings

	% of Net Asset Value
Silver Wheaton Corp.	4.5
Tourmaline Oil Corp.	4.1
Goldcorp Inc.	4.1
Potash Corporation of Saskatchewan Inc.	3.9
Baytex Energy Corp.	3.8
Allied Nevada Gold Corp.	3.8
Precision Drilling Corp.	3.8
BlackPearl Resources Inc.	3.4
Osisko Mining Corp.	3.4
Celtic Exploration Ltd.	3.3
Teck Resources Ltd., Class B	3.0
First Quantum Minerals Ltd.	2.8
Barrick Gold Corp.	2.7
Cenovus Energy Inc.	2.6
Detour Gold Corp.	2.5
Suncor Energy Inc.	2.4
Trilogy Energy Corp.	2.3
Canadian Natural Resources Ltd.	2.3
New Gold Inc.	2.2
Peyto Exploration & Development Corp.	2.0
Silver Standard Resources Inc.	1.9
SEMAFO Inc.	1.9
Athabasca Oil Sands Corp.	1.9
Painted Pony Petroleum Ltd.	1.8
Lundin Mining Corp.	1.8
	72.2

Fund Net Asset Value \$202,671,142

Weighting by Sector

	% of Net Asset Value
Materials	53.4
Energy	45.2
Cash & Other Assets	1.4

Asset Mix

	% of Net Asset Value
Canadian Equity	94.0
Foreign Equity	4.6
Cash & Other Assets	1.4

The Summary of Investment Portfolio may change due to ongoing portfolio transactions of the investment fund. A quarterly update is available. Consult our Web site www.nbc.ca/financial_reports.

Notes on forward-looking statements

This report may contain forward-looking statements concerning the Fund, its future performance, its strategies or prospects or about future events or circumstances. Such forward-looking statements include, among others, statements with respect to our beliefs, plans, expectations, estimates and intentions. The use of the expressions "foresee", "intend", "anticipate", "estimate", "assume", "believe" and "expect" and other similar terms and expressions indicate forward-looking statements.

By their very nature, forward-looking statements imply the use of assumptions and necessarily involve inherent risks and uncertainties. Consequently, there is a significant risk that the explicit or implicit forecasts contained in these forward-looking statements might not materialize or that they may not prove to be accurate in the future. A number of factors could cause future results, conditions or events to differ materially from the objectives, expectations, estimates or intentions expressed in such forward-looking statements. Such differences might be caused by several factors, including changes in Canadian and worldwide economic and financial conditions (in particular interest and exchange rates and the prices of other financial instruments), market trends, new regulatory provisions, competition, changes in technology and the potential impact of conflicts and other international events.

The foregoing list of factors is not exhaustive. Before making any investment decision, investors and others relying on our forward-looking statements should carefully consider the foregoing factors and other factors. We caution readers not to rely unduly on these forward-looking statements. We assume no obligation to update forward-looking statements in the light of new information, future events or other circumstances unless applicable legislation so provides.