



## Holiday party in Canadian public sector credit?

By Warren Lovely

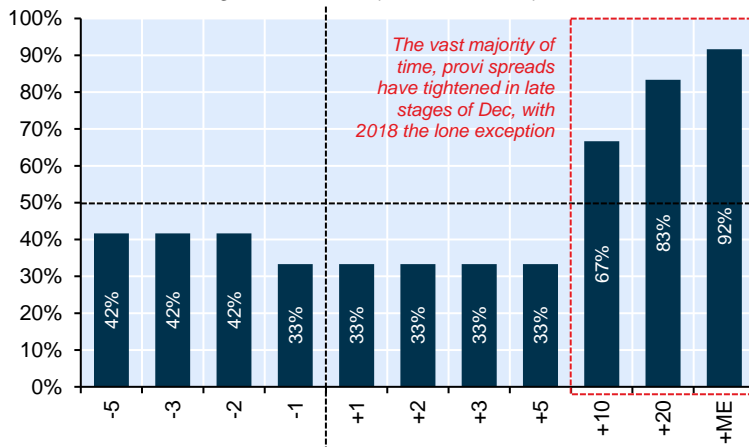
Is it too early to be thinking about holiday party season? Not if the 'holiday party' in question refers to the solid seasonal performance often registered in Canada's high-grade public sector credit markets into calendar year-end. Here we break down the typical traditional gift bestowed on provincial bondholders from multiple perspectives (some old, some new). Based purely on the empirical record, one might advise a degree of patience. With issuers traditionally steering new bond supply into the deep pools of cash that flow at the start of the month (and the related demand for duration), spread performance in/around December 1<sup>st</sup> has been something of a mixed bag in the post-GFC era. History shows spreads generally move sideways this time of year (on average). As new issue activity winds down, however, spreads often find notable traction in the thinner trading sessions characterizing the back half of December. With rate locking/paying often pushing swap spreads wider into year-end, the historical performance record is even more compelling on an asset swap basis. An examination of relative bond index total returns generally reinforces our narrative. As always, we advise caution when expressing seasonal views. As impressive as the late-December performance record has been, there will be much to control for in the days and weeks ahead... not least of which will be BoC and FOMC interest rate decisions, which could well alter the thinking on terminal rates and related pivot probabilities. So be careful this holiday season. Note: This *Market View* is an extension of our earlier analysis of December's chunky seasonal cash flows, including the following:

[Rain down on me: Canada's December bond market cash \(3-Nov\)](#) | [Simulating stuff \(4-Nov\)](#) | [December cash flows: Lucky number 13? \(14-Nov\)](#)

### Happy holidays for provincial credit: The seasonal perspective on relative spreads, returns, supply

**Chart 1: Success in provi credit tends to come late in year**

12Y success rate for 'tighter' ONT 10Y spread vs GoC up to/after 1-Dec

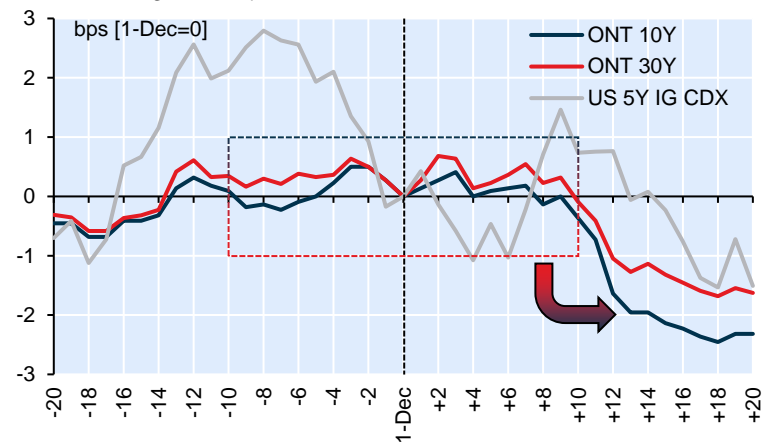


Source: NBF, BBG | Note: Based on chg in generic BM from 2010-21; +ME is to month end

Based on historical success rates, the track record for provi spreads isn't exactly stellar in/around Dec 1<sup>st</sup>. Often we've seen spreads come under a bit of pressure to start the month...

**Chart 2: Visualizing the average/seasonal pattern in spreads**

Cumulative chg in ONT spreads vs GoC & US IG CDX relative to 1-Dec

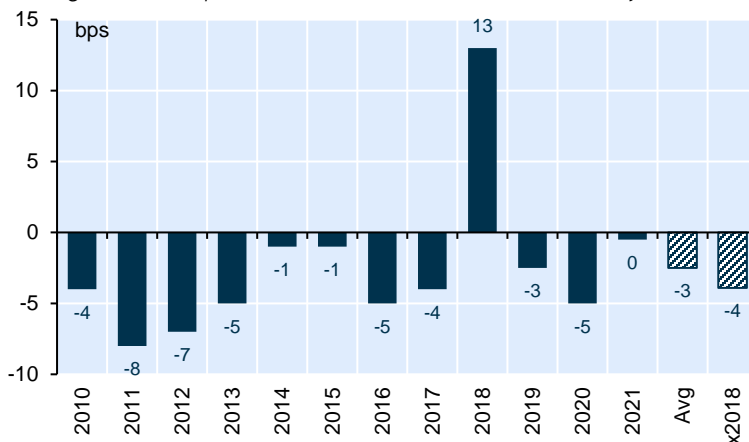


Source: NBF, BBG | Note: Based on avg chg in generic BM/index from 2010-21 (12Y)

... But the back half of Dec is another story, where provi spreads (vs Canadas) have chalked up an impressive track record (in the admittedly thin markets that characterize the holiday season).

**Chart 3: 90% of time, spreads tighten in Dec (with 2018 an outlier)**

Net chg in ONT 10Y spread vs GoC from 1-Dec to end of month/year

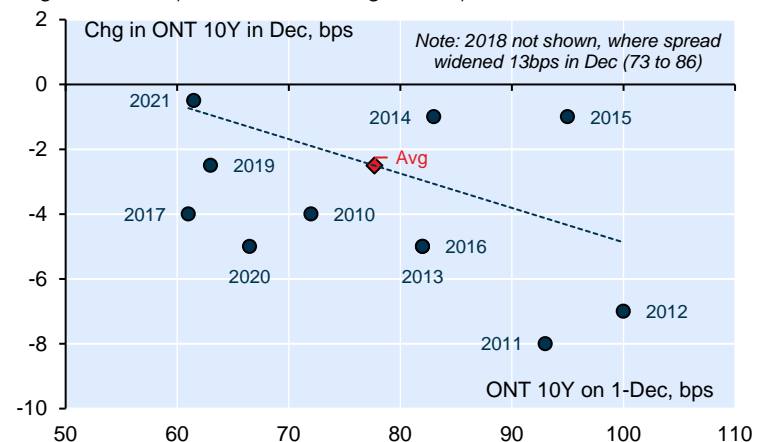


Source: NBF, BBG | Note: Based on net chg in generic BM from start to end of Dec

Looking at the net chg in provi spreads from the first of Dec to the end of the month, ONT 10s widened only once in the past dozen years. That was in 2018 as tighter policy was biting. Yikes.

**Chart 4: Scale of Dec rally partly a function of starting spread**

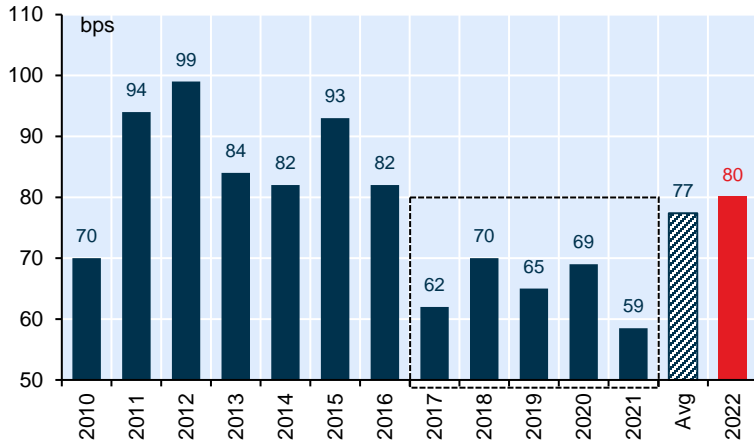
Chg in ONT 10Y spread vs GoC during Dec & spread level as at 1-Dec



Source: NBF, BBG | Note: Net chg & level for generic BM

There's some evidence that spread location influences the scope of the rally. This relationship isn't iron clad, however, with spreads having done alright even when starting from tight(er) levels.

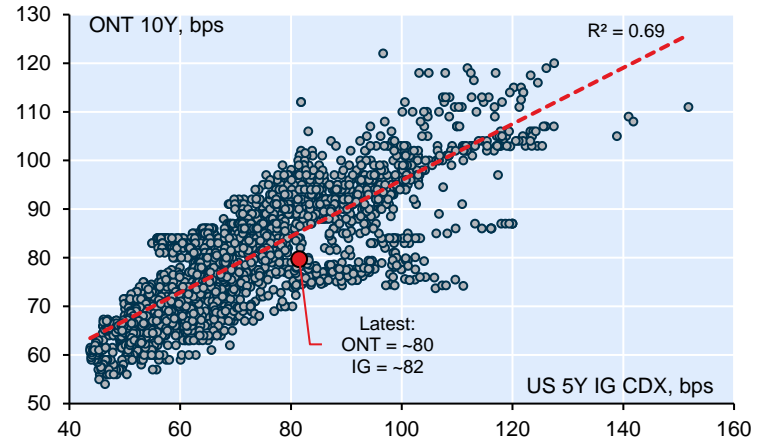
**Chart 5: Spreads wider than in recent years (& yields higher too)**  
Current vs. historical ONT 10Y spread vs GoC in lead up to 1-Dec



Source: NBF, BBG | Note: Generic BM spread as at T-8 vs 1-Dec, which for 2022 is 21-Nov

At -80bps, ONT 10s are wider than the level prevailing in each of the 5 prior years. Meantime, 10Y provi yields, at -3.85%, have been massively recast vs. 2021 (2.15%) & 2020 (-1.45%).

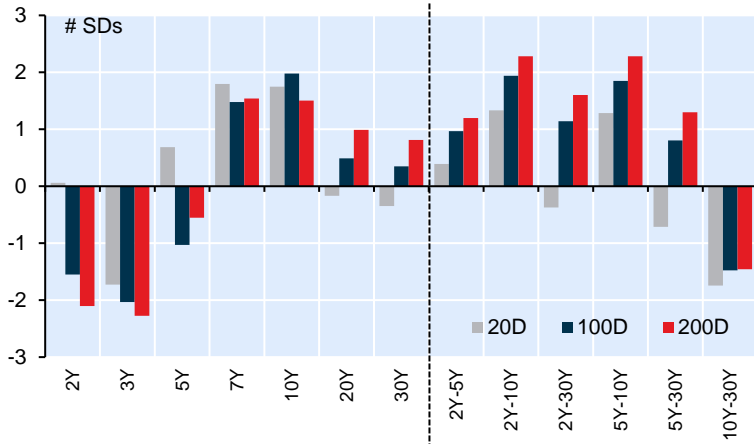
**Chart 6: Provis may not look that cheap vs. corporates...**  
ONT 10Y spread vs GoC & US 5Y IG CDX (daily from Jan-2012)



Source: NBF, BBG | Note: Based on generic BM/index; >2800 obs; latest refers to 21-Nov

A simple RV screen vs US IG CDX notionally flags provi credit as modestly 'rich' relative to the typical level observed this time of year or the 'full monty' sample of 10+ years of daily levels.

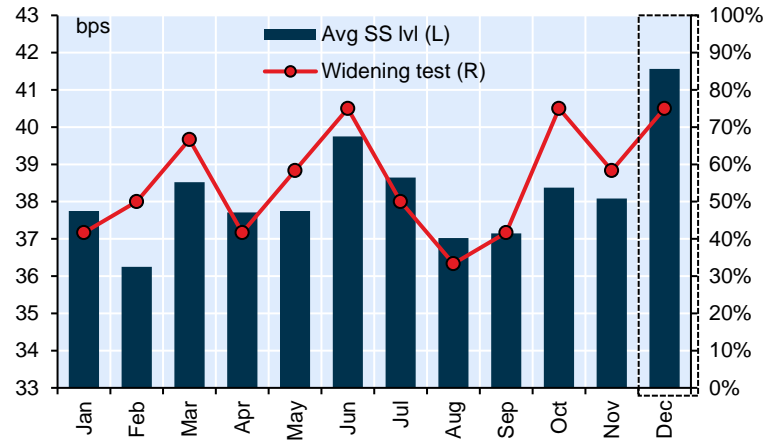
**Chart 7: ... but 10Y spreads may offer value on the curve**  
Current Z-scores for ONT constant maturity spreads & credit curves



Source: NBF | Note: Based on constant maturity NI indications vs GoC curve as at 21-Nov

So low-beta provis may be a touch snug to corps & short-dated spreads are no bargain. Still, ONT 10s look more compelling on the curve, trading 1.5 to 2 SDs removed from recent averages.

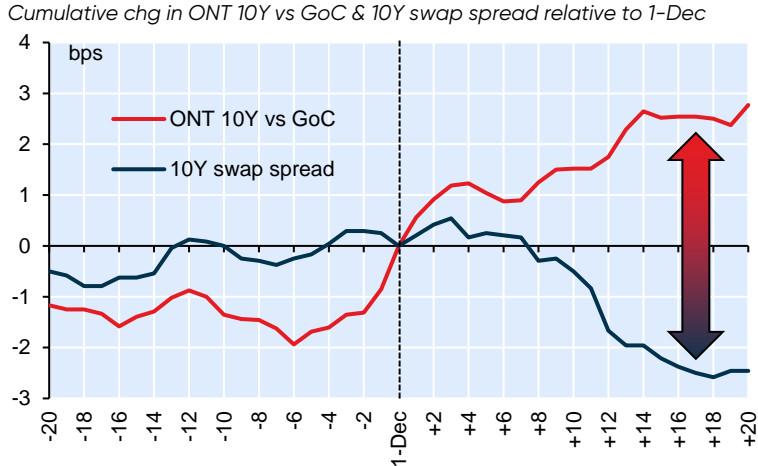
**Chart 8: Valuations influenced by swap spread seasonals**  
Avg Cdn 10Y swap spread & share of time swap spread widened by month



Source: NBF, BBG | Note: Based on 12Y sample from 2010-21

When thinking about ASW levels, note the tendency for Cdn swap spreads to widen in Dec. We've seen this 75% of the time, partly reflecting rate-locking going into calendar year-end.

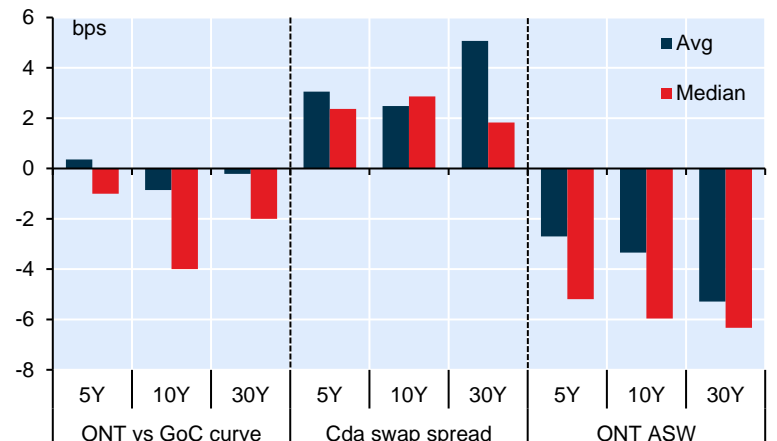
**Chart 9: Given seasonal tendency in swaps...**



Source: NBF, BBG | Note: Based on avg chg in generic BM from 2010-21 (12Y)

Overall, the historical record shows fairly consistent performance of provis vs Canadas in the final days of the year alongside broad-based widening of swap spreads in Dec...

**Chart 10: ... provincial ASW levels into year-end often striking**  
Net chg in ONT spread vs GoC & ASW basis from 1-Dec to end of month/year

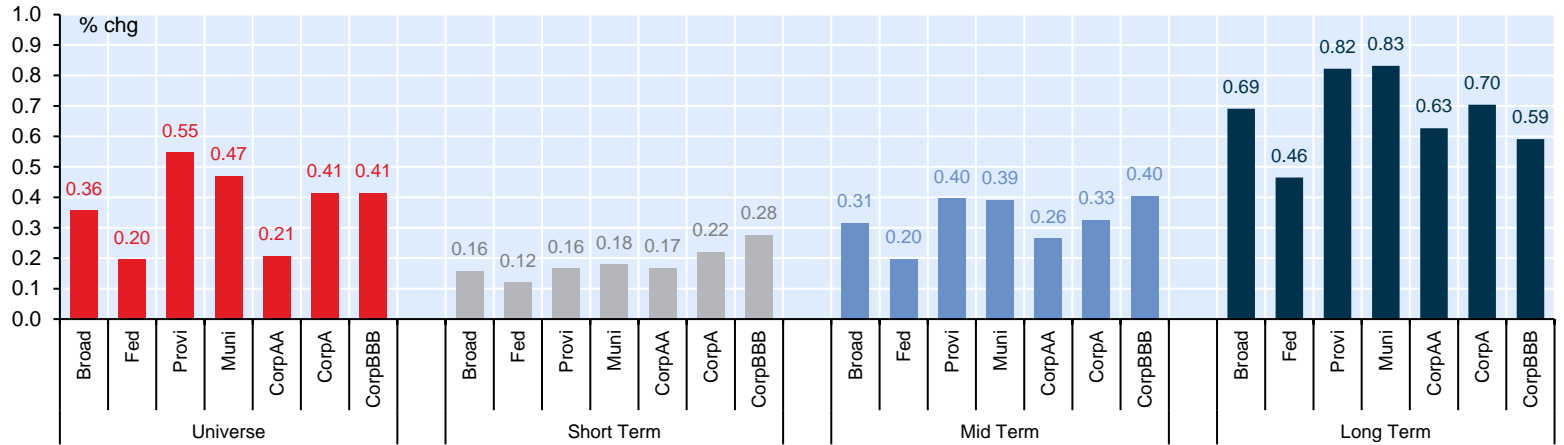


Source: NBF | Note: Based on avg chg in constant maturity indications from 2015-21 (7Y)

... The net result has been serious performance of provi credit on an ASW basis, the median Dec move -6 bps for ONT 10s based on a 7Y sample from 2015-21—nothing to sneeze at.

**Chart 11: 'Provincial' sector of Canadian bond index tends to enjoy above-average returns in December**

Average total return for FTSE Canada Universe Bond Index by bucket & select sector: December only (2010-21)

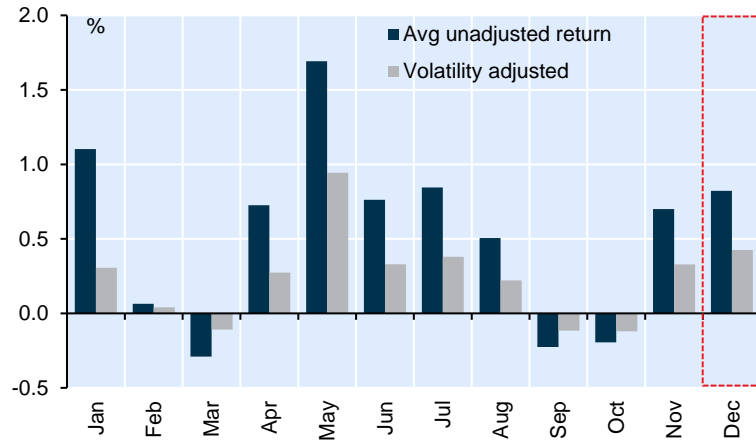


Source: NBF, FTSE Russell, BBG | Note: Based on unadjusted change in TR index from end of November to end of December; 12Y sample from 2010-21

Extend the analysis to total returns and you'll see provincials generally outperforming most other sectors of the Canadian bond market during December. This is evident in FTSE Canada Universe Bond Index and is equally apparent in the Long Term bucket. There's even more index cash arriving this December relative to prior years, which should key demand for duration, all else equal.

**Chart 12: Dec generally a good month for long provis...**

Avg total return of FTSE Canada Long Term Provincial index by month

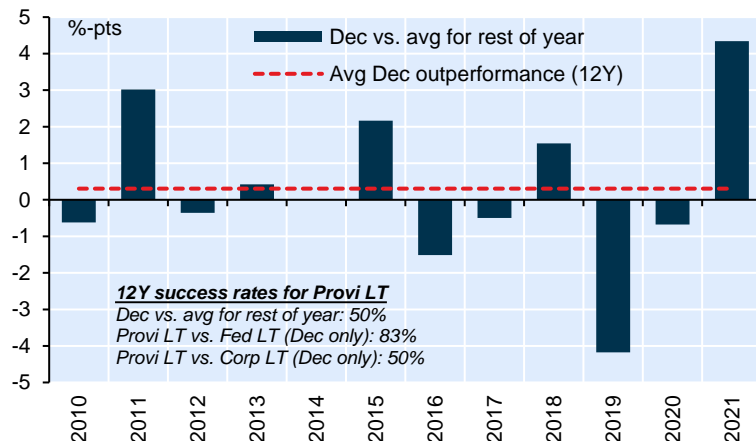


Source: NBF, FTSE Russell, BBG | Note: Based on 2010-21; vol adj divides by std dev

Based on simple, unadjusted returns, Dec might not be the very best month for long provi bonds. However, on a vol-adjusted basis, the average Dec gain trails only May in the post-GFC period.

**Chart 14: Caution: Returns can be choppy year to year...**

Relative return of FTSE Canada Long-Term Provi index: Dec vs rest of year

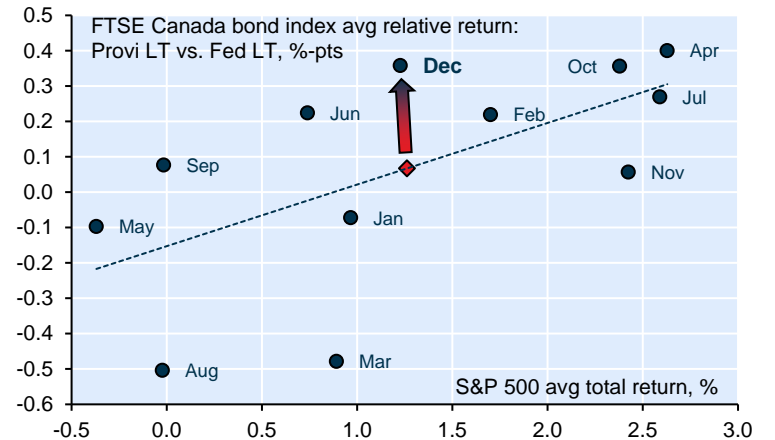


Source: NBF, FTSE Russell, BBG | Note: Based on Dec return vs avg for other 11M each yr

Caution: Bond market returns are hardly stable/steady, the FTSE Canada Universe Bond Index off nearly 12% YTD. Provi returns for the month of Dec, while +ve overall, aren't super consistent.

**Chart 13: ... particularly once you control for average risk tone**

Avg relative return of Long Term Provi index & S&P 500 total return by month

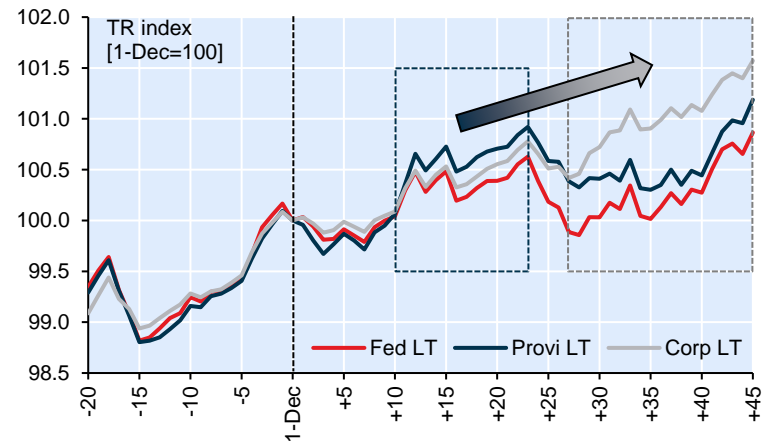


Source: NBF, FTSE Russell, BBG | Note: Based on avg returns from 2010-21

As for relative bond returns (e.g., LT provi vs LT federal), cash/coupon heavy Dec & Jun stand out positively after controlling for underlying risk sentiment (proxied here by US equity returns).

**Chart 15: ... with leadership switching to corps in new year?**

Evolution of total return of FTSE Canada Long Term indices relative to 1-Dec

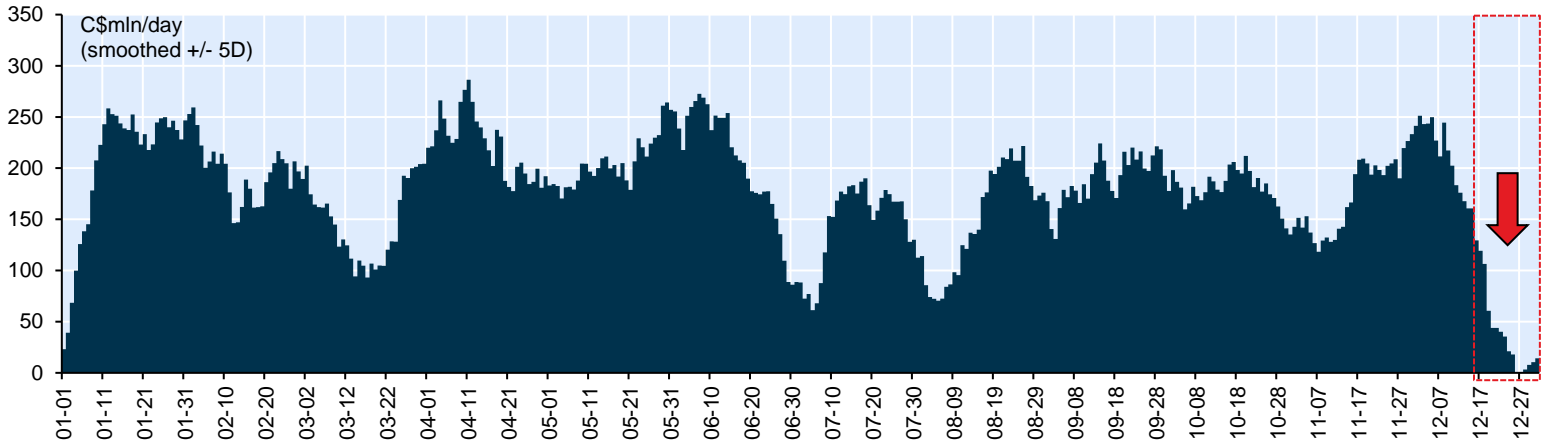


Source: NBF, FTSE Russell, BBG | Note: Based on avg TR index from 2010-21

In the past, credit market leadership often transitioned from provis late in the year to corps early in the new year. As it stands, the near-term outlook is clouded by policy rate uncertainty/anxiety.

**Chart 16: Seasonal shut down in provincial supply in back half of December**

Average daily CAD provincial bond supply (gross) over course of calendar year

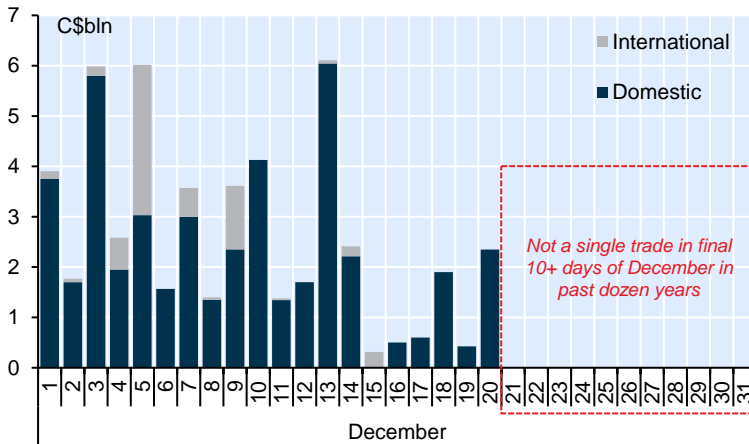


Source: NBF, BBG | Note: Domestic issuance only; smooths daily issuance by +/- 5D; based on marketable bond issuance from 2010-21

As noted, you can put some of the late-year performance of provincial credit down to a supply void. Provincial bond supply is seasonal by design. The clustering of budgets/financial reports and summer breaks influence primary activity. But no period is as quiet as the final two weeks of Dec, the temporary NI draught coinciding with tighter cash spreads and richer ASW valuations on average.

**Chart 17: Generally nothing doing last 10+ days of year**

Distribution of gross provincial bond issuance over course of December

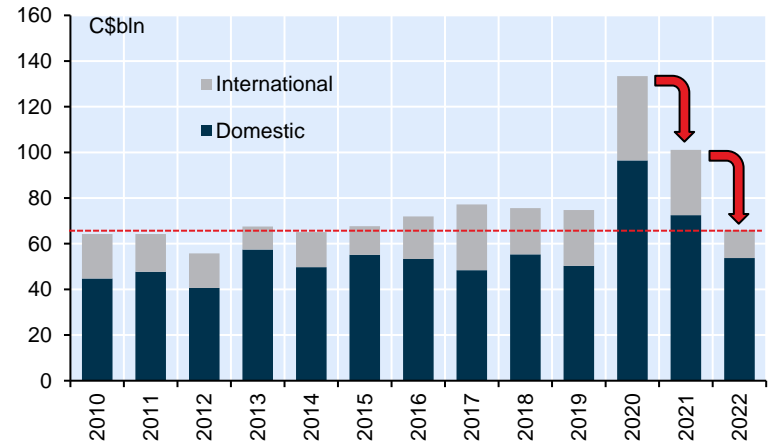


Source: NBF, BBG | Note: Distribution of C\$52bln of supply from 2010-21 by issue day

We often see healthy provi bond supply in the first half of Dec as piles of cash are put to work. But in the post-GFC era, you won't find a single marketable bond deal after the 20<sup>th</sup> month.

**Chart 18: Provi supply has stepped down big time**

Gross provincial bond issuance: YTD basis

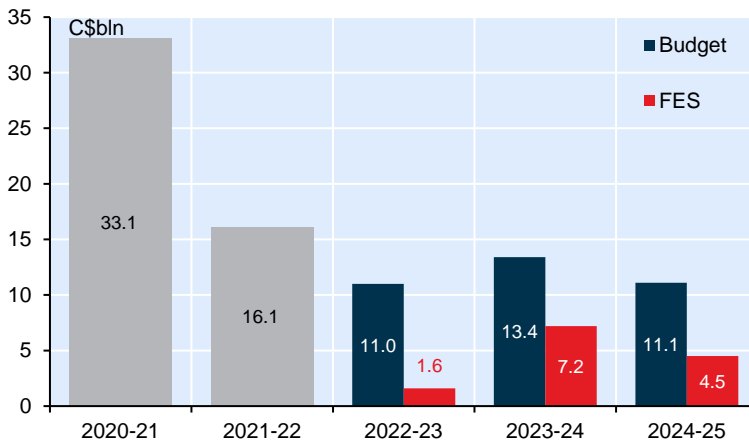


Source: NBF, BBG | Note: YTD refers to Jan-Oct period

Despite economic risks, the near-term supply outlook is hardly scary. Rather, fiscal upgrades have slashed cash requirements, with YTD issuance back to (if not below) the pre-virus trend.

**Chart 19: After maturities, little net borrowing to do**

Ontario net long-term borrowing (i.e., after maturities/redemptions)



Source: NBF, Ontario | Note: Gross long-term issuance less maturities/redemptions

After maturities, net provincial issuance has crashed lower & should remain contained in 2023. That's a constructive development given the BoC is (passively) running off its balance sheet.

**Box: Plenty of near-term wild cards/events to keep in mind**

Select events/releases going into & coming out of December 1<sup>st</sup>

In addition to the outsized Canadian bond market cash due to arrive on December 1<sup>st</sup>, 2<sup>nd</sup>, 15<sup>th</sup> & 18<sup>th</sup> there will be no shortage of items/reports/developments to keep investors on their toes. Here's a sampling, which should serve as a caution that 'all else is not necessarily equal':

- Nov-Dec: Mid-year provincial fiscal updates (specific dates vary)
- 29-Nov: Canada GDP report (Q3)
- 30-Nov: Fed Chair Jerome Powell speech
- 1-Dec: US PCE inflation (October)
- 2-Dec: US & Canada jobs reports (November)
- 7-Dec: BoC rate decision
- 8-Dec: BoC Deputy Governor Sharon Kozicki speech
- 12-Dec: BoC Governor Tiff Macklem 'fireside chat'
- 13-Dec: US CPI report (November)
- 14-Dec: Fed rate decision & updated Summary of Economic Projections
- 15-Dec: ECB rate decision
- 15-Dec: BoE rate decision
- 21-Dec: Canada CPI report (November)



## Economics and Strategy

### Montreal Office

514-879-2529

**Stéfane Marion**

*Chief Economist and Strategist*  
stefane.marion@nbc.ca

**Kyle Dahms**

*Economist*  
kyle.dahms@nbc.ca

**Alexandra Ducharme**

*Economist*  
alexandra.ducharme@nbc.ca

**Matthieu Arseneau**

*Deputy Chief Economist*  
matthieu.arseneau@nbc.ca

**Daren King, CFA**

*Economist*  
daren.king@nbc.ca

**Angelo Katsoras**

*Geopolitical Analyst*  
angelo.katsoras@nbc.ca

**Jocelyn Paquet**

*Economist*  
jocelyn.paquet@nbc.ca

### Toronto Office

416-869-8598

**Warren Lovely**

*Chief Rates and Public Sector Strategist*  
warren.lovely@nbc.ca

**Taylor Schleich**

*Rates Strategist*  
taylor.schleich@nbc.ca

### General

This Report was prepared by National Bank Financial, Inc. (NBF), (a Canadian investment dealer, member of IIROC), an indirect wholly owned subsidiary of National Bank of Canada. National Bank of Canada is a public company listed on the Toronto Stock Exchange.

The particulars contained herein were obtained from sources which we believe to be reliable but are not guaranteed by us and may be incomplete and may be subject to change without notice. The information is current as of the date of this document. Neither the author nor NBF assumes any obligation to update the information or advise on further developments relating to the topics or securities discussed. The opinions expressed are based upon the author(s) analysis and interpretation of these particulars and are not to be construed as a solicitation or offer to buy or sell the securities mentioned herein, and nothing in this Report constitutes a representation that any investment strategy or recommendation contained herein is suitable or appropriate to a recipient's individual circumstances. In all cases, investors should conduct their own investigation and analysis of such information before taking or omitting to take any action in relation to securities or markets that are analyzed in this Report. The Report alone is not intended to form the basis for an investment decision, or to replace any due diligence or analytical work required by you in making an investment decision.

This Report is for distribution only under such circumstances as may be permitted by applicable law. This Report is not directed at you if NBF or any affiliate distributing this Report is prohibited or restricted by any legislation or regulation in any jurisdiction from making it available to you. You should satisfy yourself before reading it that NBF is permitted to provide this Report to you under relevant legislation and regulations.

National Bank of Canada Financial Markets is a trade name used by National Bank Financial and National Bank of Canada Financial Inc.

### Canadian Residents

NBF or its affiliates may engage in any trading strategies described herein for their own account or on a discretionary basis on behalf of certain clients and as market conditions change, may amend or change investment strategy including full and complete divestment. The trading interests of NBF and its affiliates may also be contrary to any opinions expressed in this Report.

NBF or its affiliates often act as financial advisor, agent or underwriter for certain issuers mentioned herein and may receive remuneration for its services. As well NBF and its affiliates and/or their officers, directors, representatives, associates, may have a position in the securities mentioned herein and may make purchases and/or sales of these securities from time to time in the open market or otherwise. NBF and its affiliates may make a market in securities mentioned in this Report. This Report may not be independent of the proprietary interests of NBF and its affiliates.

This Report is not considered a research product under Canadian law and regulation, and consequently is not governed by Canadian rules applicable to the publication and distribution of research Reports, including relevant restrictions or disclosures required to be included in research Reports.



### UK Residents

This Report is a marketing document. This Report has not been prepared in accordance with EU legal requirements designed to promote the independence of investment research and it is not subject to any prohibition on dealing ahead of the dissemination of investment research. In respect of the distribution of this Report to UK residents, NBF has approved the contents (including, where necessary, for the purposes of Section 21(1) of the Financial Services and Markets Act 2000). This Report is for information purposes only and does not constitute a personal recommendation, or investment, legal or tax advice. NBF and/or its parent and/or any companies within or affiliates of the National Bank of Canada group and/or any of their directors, officers and employees may have or may have had interests or long or short positions in, and may at any time make purchases and/or sales as principal or agent, or may act or may have acted as market maker in the relevant investments or related investments discussed in this Report, or may act or have acted as investment and/or commercial banker with respect hereto. The value of investments, and the income derived from them, can go down as well as up and you may not get back the amount invested. Past performance is not a guide to future performance. If an investment is denominated in a foreign currency, rates of exchange may have an adverse effect on the value of the investment. Investments which are illiquid may be difficult to sell or realise; it may also be difficult to obtain reliable information about their value or the extent of the risks to which they are exposed. Certain transactions, including those involving futures, swaps, and other derivatives, give rise to substantial risk and are not suitable for all investors. The investments contained in this Report are not available to retail customers and this Report is not for distribution to retail clients (within the meaning of the rules of the Financial Conduct Authority). Persons who are retail clients should not act or rely upon the information in this Report. This Report does not constitute or form part of any offer for sale or subscription of or solicitation of any offer to buy or subscribe for the securities described herein nor shall it or any part of it form the basis of or be relied on in connection with any contract or commitment whatsoever.

This information is only for distribution to Eligible Counterparties and Professional Clients in the United Kingdom within the meaning of the rules of the Financial Conduct Authority. NBF is authorised and regulated by the Financial Conduct Authority and has its registered office at 70 St. Mary Axe, London, EC3A 8BE.

NBF is not authorised by the Prudential Regulation Authority and the Financial Conduct Authority to accept deposits in the United Kingdom.

### US Residents

With respect to the distribution of this report in the United States of America, National Bank of Canada Financial Inc. ("NBCFI") which is regulated by the Financial Industry Regulatory Authority (FINRA) and a member of the Securities Investor Protection Corporation (SIPC), an affiliate of NBF, accepts responsibility for its contents, subject to any terms set out above. To make further inquiry related to this report, or to effect any transaction, United States residents should contact their NBCFI registered representative.

This report is not a research report and is intended for Major US Institutional Investors only.

This report is not subject to US independence and disclosure standards applicable to research reports.

### HK Residents

With respect to the distribution of this report in Hong Kong by NBC Financial Markets Asia Limited ("NBCFMA") which is licensed by the Securities and Futures Commission ("SFC") to conduct Type 1 (dealing in securities) and Type 3 (leveraged foreign exchange trading) regulated activities, the contents of this report are solely for informational purposes. It has not been approved by, reviewed by, verified by or filed with any regulator in Hong Kong. Nothing herein is a recommendation, advice, offer or solicitation to buy or sell a product or service, nor an official confirmation of any transaction. None of the products issuers, NBCFMA or its affiliates or other persons or entities named herein are obliged to notify you of changes to any information and none of the foregoing assume any loss suffered by you in reliance of such information.

The content of this report may contain information about investment products which are not authorized by SFC for offering to the public in Hong Kong and such information will only be available to, those persons who are Professional Investors (as defined in the Securities and Futures Ordinance of Hong Kong ("SFO")). If you are in any doubt as to your status you should consult a financial adviser or contact us. This material is not meant to be marketing materials and is not intended for public distribution. Please note that neither this material nor the product referred to is authorized for sale by SFC. Please refer to product prospectus for full details.

There may be conflicts of interest relating to NBCFMA or its affiliates' businesses. These activities and interests include potential multiple advisory, transactional and financial and other interests in securities and instruments that may be purchased or sold by NBCFMA or its affiliates, or in other investment vehicles which are managed by NBCFMA or its affiliates that may purchase or sell such securities and instruments.

No other entity within the National Bank of Canada group, including National Bank of Canada and National Bank Financial Inc, is licensed or registered with the SFC. Accordingly, such entities and their employees are not permitted and do not intend to: (i) carry on a business in any regulated activity in Hong Kong; (ii) hold themselves out as carrying on a business in any regulated activity in Hong Kong; or (iii) actively market their services to the Hong Kong public.

### Copyright

This Report may not be reproduced in whole or in part, or further distributed or published or referred to in any manner whatsoever, nor may the information, opinions or conclusions contained in it be referred to without in each case the prior express written consent of NBF.